

## IEC Three Phase Squirrel-Cage Motors Standard Motors Frame Sizes 160 to 225

### Technical Data

Cast iron housing, Basic version

IE1	Rated Output kW	Size	Type	Rated Speed rpm	Nominal Efficiency	Power Factor	Rated Current at 400v A	Rated Torque Nm	Starting Torque	Starting Current
									For Direct-on-line starting as multiple of the rated	
									Torque	Current
3000 rpm, 2-poles, 50 Hz, 400V										
11	160	51117	2940	89.5	0.88	20.00	36.0	2.1	6.5	
15		51157	2940	90.0	0.90	26.50	49.0	2.2	6.6	
18.5		51187	2940	91.0	0.91	32.00	60.0	2.4	7.0	
22	180	56225	2945	91.6	0.86	40.50	71.0	2.5	6.4	
30	200	59305	2950	91.8	0.88	54.00	97.0	2.3	6.5	
37		59375	2955	92.9	0.89	65.00	120.0	2.5	7.2	
45		62455	2960	93.6	0.88	79.00	145.0	2.4	6.7	
1500 rpm, 4-poles, 50 Hz, 400V										
11	160	52117	1460	88.5	0.84	21.50	72.0	2.2	6.2	
15		52157	1460	90.0	0.84	28.50	98.0	2.6	6.5	
18.5	180	57185	1465	90.4	0.84	35.00	120.0	2.4	6.7	
22		57225	1465	91.0	0.84	41.50	143.0	2.5	6.9	
30	200	60305	1465	91.6	0.85	56.00	195.0	2.5	6.7	
37	225	63375	1475	92.2	0.85	68.00	239.0	2.5	6.7	
45		63455	1475	93.1	0.86	81.00	290.0	2.7	7.2	
1000 rpm, 6-poles, 50 Hz, 400V										
7.5	160	53757	960	86.0	0.74	17.00	75.0	2.1	4.6	
11		53117	960	87.5	0.74	24.50	109.0	2.3	4.8	
15	180	58155	965	88.9	0.83	29.50	148.0	2.3	5.3	
18.5	200	61185	975	89.8	0.81	36.50	181.0	2.5	5.6	
22		61225	975	90.3	0.81	43.50	215.0	2.6	5.7	
30	225	64305	978	91.8	0.83	57.00	293.0	2.7	5.6	
750 rpm, 8-poles, 50 Hz, 400V										
4	160	53047	715	80.0	0.72	10.00	53.0	2.2	4.5	
5.5		53557	715	83.5	0.73	13.00	74.0	2.3	4.7	
7.5		53758	715	85.5	0.72	17.60	100.0	2.7	5.3	
11	180	58115	725	87.5	0.73	25.00	145.0	1.7	4.2	
15	200	61155	725	87.7	0.76	32.50	198.0	2.2	4.9	
18.5	225	64185	730	89.4	0.78	38.50	242.0	2.3	5.5	
22		64225	730	89.7	0.79	45.00	288.0	2.3	5.6	



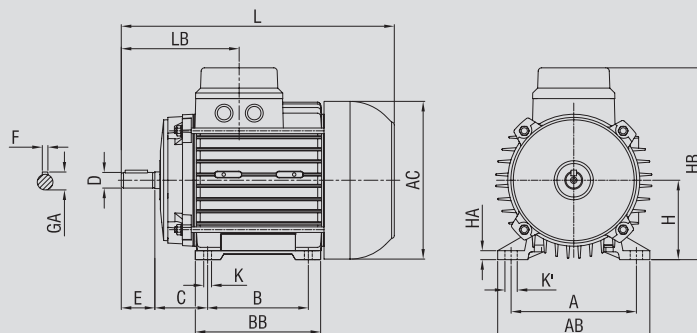
ELECTROGEN

## IEC Three Phase Squirrel-Cage Motors Foot-Mounted Motor, IMB3

### Dimensions



Frame Size	Housing		No. of Poles	Dimension drawing according to IEC																														
	Cast Aluminium	Cast Iron		H	B	A	C	K	K'	D	E	F	GA	HA	BB	AB	AC	HB	LB	L														
63	Yes	No	2-8	63	80	100	40	M6	12	11	23	4	12.5	7	101	120	124	155	91.5	208														
71				71	90	112	47		11	14	30	5	16	8	112	136	141	171.5	105	244														
80				100	124.5	50	M8	15.5	19	40	6	21.5	12	125	150	159	193	118	273															
90S																				90	140	56	18	24	50	26.9	13	123	171	176	210	133	306	
90L				Yes	No	2-8	90	125	140	56	M10	21	28	60	8	30.9	12.5	174.5	194	194.5	235	152.5	403											
100							100	140	63	14														183	226.5	219.5	259	161	416					
112							112	140	190	70														38	80	10	41.3	16	248	260	259	327	215	532
132							132	178-210	216	89														23	42	12	45.1	23	302	318	156.5	393	264	615
160				Yes	Yes	2-8	160	254	254	108	M12	19	48	110	14	51.5	19	325	344	354	437	339	664											
180				180	239-277		279	121	26	55														16	58.8	27	352	377	395	495	307	723		
200	No	Yes	2-8	200	305	318	133	M16	27	60	140	18	63.8	34	357	437	438	546	407	832														
225				225	286-311	357	149																											

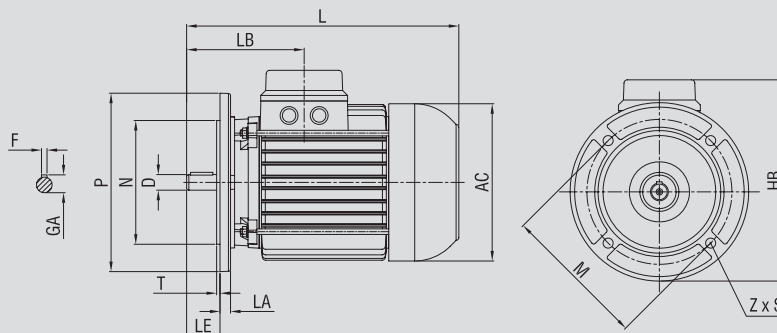


## IEC Three Phase Squirrel-Cage Motors Flange-Mounted Motor, IMB5

### Dimensions



Frame Size	Housing		No. of Poles	Dimension drawing according to IEC																			
	Cast Aluminium	Cast Iron		P	N	M	LA	T	D	LE	F	GA	AC	HB	Z	S	LB	L					
63	Yes	No	2-8	140	95	115	10	3	11	23	4	12.6	124	160	4	M8	91.5	208					
71				160	110	130	9	3.5	14	30	5	16	141	180.5			105	244					
80				200	130	165	11		4	19	40	6	21.5	159		213	118	273					
90S				200				24		50	8	26.9	176	220		M10	133	306					
90L				250	180	215	12.5	4	28	60		30.9	194.5	257			M12	152.5	403				
100				250			15		38	80	10		41.3	259		346		219.5	272	161	416		
112				Yes	Yes	2-8	300	230	265	17	5	42	110	12		45.1	313	404	M16	264	615		
160							350	250	300	13		48		14		51.5	355	434		339	664		
180							No	Yes	400	300		350	15	55		140	16	58.8		395	521	307	723
200									450	350		400	16	60			18	63.8		438	546	8	407
225																							





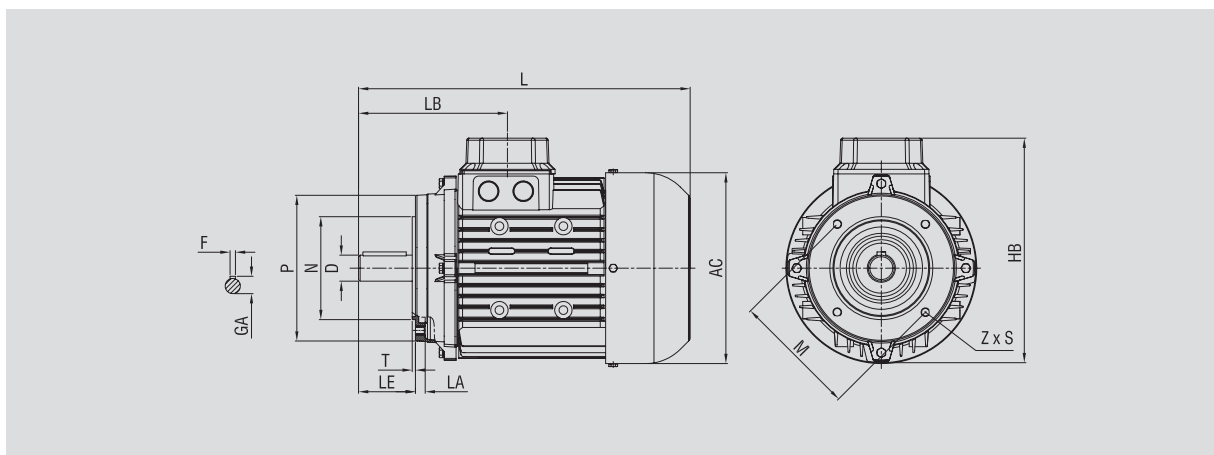
ELECTROGEN

## IEC Three Phase Squirrel-Cage Motors Flange-Mounted Motor,IMB14

### Dimensions



Frame Size	Housing		No. of Poles	Dimension drawing according to IEC															
	Cast Aluminium	Cast Iron		P	N	M	LA	T	D	LE	AC	HB	L	LB	Z	S	F	GA	
63	Yes	No	2-8	90	60	75	8	2.5	11	23	124	153	208	91.5	4	M4	4	12.6	
71				106	70	85	9.5		14	30	141	171	244	105			M6	5	16
80				119	80	100	9			19	40	159	195	273				118	6
90S				135	95	115		17	24	50	176	210	306	133		M8	8	26.9	
90L				160	110	130	3.5						28						60
100				16.5	28	60	218	257	416	161	331	133	30.9						
112																			

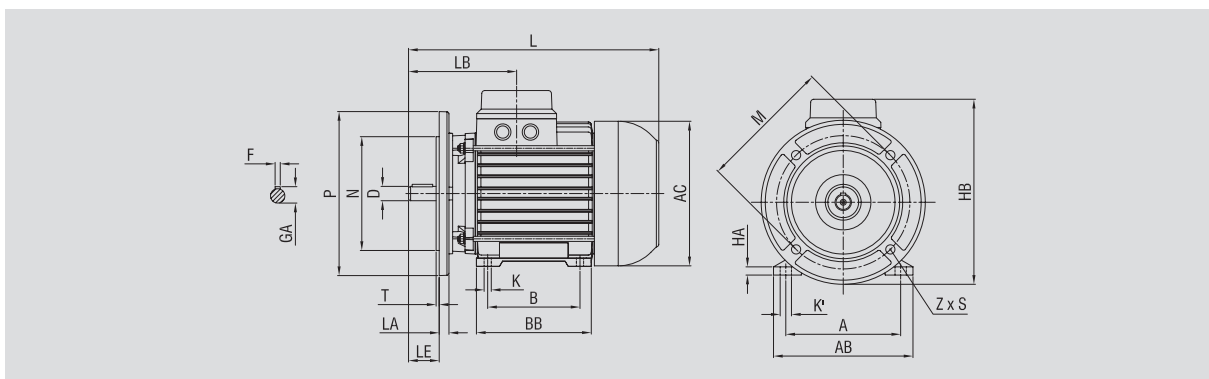


## IEC Three Phase Squirrel-Cage Motors Foot and Flange-Mounted Motor, IMB35

### Dimensions



Frame Size	Housing		No. of Poles	Dimension drawing according to IEC																											
	Cast Aluminium	Cast Iron		P	N	M	LA	T	D	LE	F	GA	AC	HB	Z	S	LB	L	B	A	K	K'	HA	BB	AB						
63	Yes	No	2-8	140	95	115	10	3	11	23	4	12.6	124	160	4	M8	91.5	208	80	100	M6	12	7	101	120						
71				160	110	130	9	3.5	14	30	5	16	141	180.5			180.5	105	244	90		112	11	8	112	136					
80				200	130	165	11		19	40	6	21.5	159	213		213	M10	118	273	100	124.5	M8	15.5	12	125	150					
90S				200				24	50	8	26.9	176	220	133		306		125	140		18		13	123	171						
90L				Yes	Yes	2-8	250	180	215		12.5	4	28	60		30.9	194.5	257	M12	152.5	403	140	160	M10	21	12.5	175	194			
100							250			15	38		80	10			41.3	259		346	219.5	272	215			532	178-210	216	16	248	260
112							Yes	Yes	2-8	300	230	265	17	5		42	110	12	45.1	313	404	M16	264	615	254	254	M12	23	23	302	318
132										350	250	300	13			48		14	51.5	355	434		339	664	239-277	279		19	19	325	344
160				No	Yes	2-8	400	300	350	15	5	55	180	16		58.8	395	521	M16	307	723	305	318	M16	26	27	352	377			
180							450	350	400	16		60		140		18	63.8	438		546	407	832	286-311		357	27	34	357	437		
200	450	350	400				16	60	140	18		63.8		438	546	407	832	286-311		357	27	34	357		437						
225																															



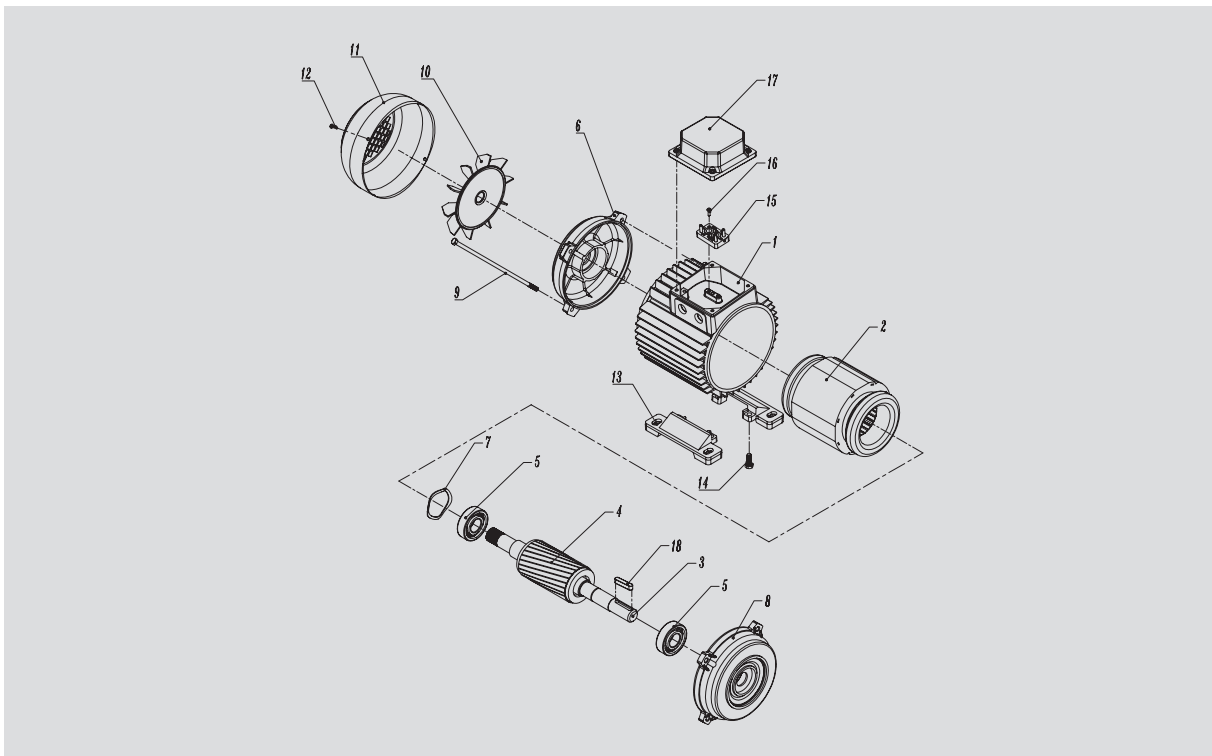


ELECTROGEN

## IEC Three Phase Squirrel-Cage Motors Standard Motors up to Frame Size 225

### Spare Parts

Part No.	Designation	Part No.	Designation
1	Frame	10	Fan
2	Stator	11	Fan Cover
3	Shaft	12	Screw for Fan Cover
4	Rotor	13	Frame Feet (1 Pair)
5	Bearing , N-end	14	Screw for Frame Feet
5	Bearing , D-end	15	Terminal board
6	Endshield , N-end	16	Screw for Terminal board
7	Wave Spring , N-end	17	Terminal box Cover
8	Endshield , D-end	18	Key , D-end
9	Screws for Endshields		





ELECTROGEN

## IEC Three Phase Squirrel-Cage Motors Standard Motors Frame Sizes 160 to 225

### Stator Housing

Cast Iron Series



Frame Size	Stator Housing Dimensions															
	H	B	A	DA	DG	DZ	DL	S	L	BB	AB	AD	HA	LF <sub>e</sub>	K	K'
160	160	254	254	260	310	270	286	M10	320	302	318	164	23	220	12.5	23
180	180	239-277	279	280	340	291	312	M10	310	325	344	182	19	180	14	19
200	200	305	318	310	374	323	347	M12	350	352	377	199	27	190	26	18
225	225	286-311	357	350	422	364	388		415	357	437	224	34	225	27	19

